

O C

WILD

about camp

2024 Camp Guide



nssra
Northern Suburban Special
Recreation Association
Play • Grow • Belong

MEET TEAM CAMP

WE'RE WILD ABOUT CAMP



Erin White
Recreation Manager

(224) 330-6830

ewhite@nssra.org



Christian Guenther
Recreation Specialist

(224) 330-6863

cguenther@nssra.org



Stephany Hoch
Recreation Specialist

(224) 330-6812

shoch@nssra.org



Mel Robson
Superintendent

(224) 330-6829

mrobson@nssra.org



Dani Aponte
Registrar

(224) 330-6815

daponte@nssra.org

Address

1221 County Line Rd.,
Highland Park, IL 60035

Office Hours

Monday - Friday
9:00 am to 5:00 pm

Online

www.nssra.org

Email

info@nssra.org

Phone

(847) 509-9400

Fax

(847) 509-1177

Emergency/On-Call Phone

Day Camp On Call/Emergency
phone is active from June 3rd
-August 5th: (847) 452-3372

Individuals who are deaf or hearing
impaired can call NSSRA through
the Illinois Relay System by dialing
711 or 1 (800) 526-0844.



TABLE OF CONTENTS

General Camp Information.	4 - 7	Code of Conduct.	18 - 19
Traditional Day Camps.	9 - 13	General Policies	20 - 23
Pre and Post Camps	14 - 15	Safety and Insurance Information	24
Friday Field Trips.	16 - 17	Registration Form	25 - 26



NSSRA's Partner Communities

As a cooperative of 13 partner communities, one representative from each partner community serves on our Board of Directors, collaborating to provide leadership and governance to NSSRA.

Deerfield Park District	Laura McCarty
Glencoe Park District	Lisa Sheppard
Glenview Park District	Michael McCarty
Park District of Highland Park	Brian Romes
City of Highwood	Jim Hospodarsky
Kenilworth Park District	Johnathan Kiwala
Lake Bluff Park District	John Bealer
City of Lake Forest	Sally Swarthout
Northbrook Park District	Chris Leiner
Northfield Park District	Bill Byron
Village of Riverwoods	Kris Ford
Wilmette Park District	Steve Wilson
Winnetka Park District	Shannon Nazzal

NSSRA families and the community are invited to attend board meetings on designated Thursdays at 10:00 am. Board meeting schedules can be found online at nssra.org.

NSSRA's Core Values

Compassion, Respect, Quality, Flexible, Accountable and Ethical Practices.

NSSRA's Vision

To be leaders in recreation by providing innovative and exceptional services for people with disabilities.

NSSRA's Services

NSSRA services include traditional, inclusive, cooperative, summer camp programs, special events, overnight trips, camps, Gator Athletics/Special Olympics, and more.

NSSRA's Mission

Enrich the lives of people with disabilities in our partner communities through quality recreation services.

Diversity, Equity, and Inclusion Statement

NSSRA is committed to cultivating an inclusive, equitable and safe environment. NSSRA works to remove barriers by fostering a culture that embraces diversity and treats all people with dignity and respect.



GENERAL CAMP INFORMATION

YOUR MAP TO EVERYTHING CAMP

How to Register

Online at nssra.org/programs/camps

Fax to (847) 509-1177

Email your registration form to
registration@nssra.org

Drop Off or Mail to 1221 County Line Rd.
Highland Park,
IL 60035

- 📄 The NSSRA registration form can be downloaded, or submitted at NSSRA.org/forms.
- 📄 New to NSSRA? Please complete the form at this link to create an account in our system by Monday, February 12. This will ensure you are set up in our software before registration opens on February 19: nssra.org/new-participant/

Registration

Registration for all programs in this guide will begin on February 19 at 9:00 am.

- ▶ Registration for traditional camps are first-come, first-served.
- ▶ NSSRA uses a lottery system for pre- and post-camp and all Friday Field Trips.

**To learn more about NSSRA's lottery system please visit
nssra.org/us/policies/registration-policies/**

NSSRA staff will regularly review the waitlists and will contact you if a spot becomes available in a program.

Required for Registration

ePACT replaced our Annual Information Form, Seizure Information Form and Allergy Form.

- ▶ Contact our office to receive an email invite to share information with NSSRA.
- ▶ Click 'Complete Request' to create a free account or log in if you already have an existing ePACT account.
- ▶ Enter the required information, like medical conditions, and share it with NSSRA so that program staff have access.
- ▶ You can update this information anytime a change happens.
- ▶ **You must have a current ePACT profile prior to registration.**

Have questions? Don't hesitate to get in touch with us at registration@nssra.org.



Camp Late Pick Up Policy

If a camper has not been picked up at the scheduled camp end time:

- ▢ NSSRA will contact the parent/guardian/group home staff for campers not picked up at the scheduled camp end time.
- ▢ If the camper has not been picked up after a ten-minute wait, NSSRA will call emergency contacts, and a fee may be applied.

Camp Refunds

NSSRA will grant full refunds for all camps up to the registration deadline, March 17.

- ▢ NSSRA will make a prorated refund of the camp and transportation fee less a \$10 administration fee and NSSRA-incurred costs if cancelled more than one month before the start of the camp session.
- ▢ Within one month of the camp session, NSSRA will only refund for medical reasons with a note from your doctor. When canceling for a medical reason, refunds are minus NSSRA prepaid costs.

Transportation

Parents will be responsible for arranging transportation to and from camp, unless otherwise stated. Transportation for outings will be provided by NSSRA.

Program descriptions will indicate if transportation is available. If the program offers optional transportation, a separate code and fee will be listed. If you register for transportation, note the transportation code, fee and desired pick up/drop off location when registering.

Transportation times and pick up points are subject to change based on enrollment. A minimum of three participants is needed at each pick up/drop off location. NSSRA staff will communicate any changes in transportation prior to the program season. If a participant is registered for transportation and will not need pick up and/or drop off on a particular day, please notify NSSRA by calling the front office at (847) 509-9400. Routes are otherwise unnecessarily delayed.

To review NSSRA's Transportation Policies, please visit www.nssra.org/us/policies/transportation-policies/

GENERAL CAMP INFORMATION

YOUR MAP TO EVERYTHING CAMP

Parent Information

Parent letters will be emailed approximately two weeks before the start of camp. The letter will include site details and calendar of events.

Financial Assistance and Payment Plans

Financial assistance is open to NSSRA residents who complete an Scholarship Application and submit a \$125 deposit with their registration. To receive a Scholarship Application or to request a payment plan, please contact the NSSRA office at (847) 509-9400 or info@nssra.org.

Lunch, Snacks and Drinks

Campers should bring a labeled lunch and/or snack and drink each day.

Camp Goals

To provide campers with recreation and leisure activities during the summer months. Activities will focus on socialization, independence, motor development, leisure education and an overall sense of well-being through participation.

Communication and Safety

Communication books will be used daily for each camper to help facilitate communication between families and staff. Communication books will be available at the open house or sent home on the first day.

If your child requires specific accommodations, please contact Stephany Hoch at (847) 509-9400 x6812 or shoch@nssra.org.

What to Wear and Bring to Camp

Please send campers in comfortable clothes and gym shoes each day. On swim days, campers should bring a labeled swimsuit and towel. Campers should also bring a labeled backpack, change of clothes and sunscreen each day. Most campers are required to bring a lunch and drink each day. If your child will need to utilize a floatation device while swimming, please note that it must be coastguard approved to be utilized at our member pool facilities. A detailed schedule will be mailed home prior to camp.

Medication

At times campers require assistance taking medication during programs. If camper is unable to self-medicate or take the medication prior to or after the program, NSSRA requires additional paperwork and pre-packaged medication be delivered to our office prior to the program.

Please contact Erin White at (847) 509-9400 x6830 or ewhite@nssra.org with any questions.

Open House

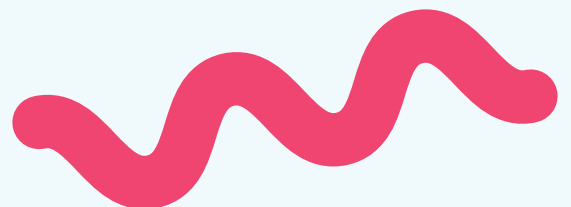
Information regarding the open house will be communicated to campers and parents. The open house provides an opportunity to ask questions, get daily activity schedules and learn more about camp

Intake Meetings

All new campers will be contacted by Stephany Hoch to set up an intake and observation meeting.

Questions?

Camp Questions may be directed to Erin White, Recreation Manager for Camps, at (847) 509-9400 x6830 or ewhite@nssra.org.



CAMPS AT A GLANCE

Day	Program	Time	Ages	Page
Traditional Day Camps				
Mon - Thur	Lake Forest Explorers	12:00 - 3:45 pm	14 - 22	9
Mon - Thur	New Trier Trailblazers	12:00 - 3:30 pm	14 - 22	10
Mon - Thur	Glenbrook Pathfinders	1:30 - 4:00 pm	14 - 22	10
Mon - Thur	District 34 Happy Campers	11:30 - 2:30 pm	5 - 13	11
Mon - Thur	Adventure Seekers	1:15 - 4:00 pm	14 - 22	12
Mon - Fri	Campyardigans	12:00 - 3:00 pm	5 - 13	13
Mon - Fri	Camp Sunburst	12:00 - 3:00 pm	5 - 13	13
Pre-Camp and Post-Camp				
Mon - Fri	Pre Camp	9:00 - 3:00 pm	5 - 13	14
Mon - Fri	Post Camp 1 and 2	9:00 - 2:45 pm	5 - 22	15
Finally Friday Field Trips				
Friday, June 14	Mystic Gardens	10:00 am - 3:00 pm	5 - 22	16
Friday, June 21	Get Out & Play!	10:00 am - 3:00 pm	5 - 22	16
Friday, June 28	Trail Explorers	10:00 am - 3:00 pm	5 - 22	17
Friday, July 12	Where the Wild Things Are	10:00 am - 3:00 pm	5 - 22	17
Friday, July 19	Aquatic Adventures	10:00 am - 3:00 pm	5 - 22	17

TRADITIONAL DAY CAMPS

Lake Forest Explorers

Location: Lake Forest High School

Eligibility: Students that attend Lake Forest Summer School

Age: 14 - 22

Min/Max: 8/10

Calling all Lake Forest students who are ready for a summer filled with friends and fun. Lake Forest Explorers offers camp activities for students who attend Lake Forest High School's summer school session. Activities will include sports, games, swimming, arts, crafts, outdoor activities and more!

- ▣ NSSRA will provide registered campers with a t-shirt.
- ▣ A detailed schedule will be mailed home prior to camp.
- ▣ Transportation home will be provided by the school district.
- ▣ Registration is first come, first served.

Time: 12:00 - 3:45 pm

Days: Monday - Thursday

Dates: June 10 - June 27 (No program June 19)

Program Code / Fee: 350001-01 / \$797



TRADITIONAL DAY CAMPS

New Trier Trailblazers

Location: New Trier High School, Winnetka

Eligibility: Students that attend New Trier Summer School

Age: 14 - 22

Min/Max: 8/15

It's our favorite time of year, Summer with NSSRA and New Trier! The New Trier Rec Program offers day camp activities for students who attend New Trier's summer school session. Activities will include sports, games, swimming, arts, crafts, outdoor activities, and more!

- ▣ NSSRA will provide registered campers with a t-shirt.
- ▣ A detailed schedule will be mailed home prior to camp.
- ▣ Parents must pick up campers after camp.
- ▣ Registration is first come, first served.

Time: 12:00 - 3:30 pm

Days: Monday - Thursday

Dates: June 10 - July 18 (No Program June 19 and July 4)

Program Code / Fee: 350002-01 / \$1487



Glenbrook Pathfinders

Location: Glenbrook North High School, Northbrook

Eligibility: Students that attend Glenbrook Summer School

Age: 14 - 22

Min/Max: 8/10

Join NSSRA for a summer of fun with your friends! The Glenbrook Pathfinders offers camp activities for students who attend Glenbrook's summer school session. Activities will include sports, games, swimming, arts, crafts, outdoor activities and more!

- ▣ NSSRA will provide registered campers with a t-shirt.
- ▣ A detailed schedule will be mailed home prior to camp.
- ▣ Registration is first come, first served.

Time: 1:30 - 4:00 pm

Days: Monday - Thursday

Dates: June 10 - July 25 (No Program June 19 and July 1 - July 4)

Program Code / Fee: 350003-01 / \$1217





District 34 Happy Campers

Location: Westbrook School, Glenview

Eligibility: Students that attend District 34 Summer School

Age: 5 - 13

Min/Max: 8/10

Who's ready for a fun filled summer with District 34 and NSSRA?! Back by popular demand, NSSRA is partnering with students in District 34's summer school program to offer recreational camp activities for students in the afternoon. Activities will include sports, games, swimming, arts, crafts, outdoor activities and more!

- ▢ NSSRA will provide registered campers with a t-shirt.
- ▢ A detailed schedule will be mailed home prior to camp.
- ▢ Parents must pick up campers after camp.
- ▢ Transportation home will be provided by the School District.
- ▢ Registration is first come, first served.

Time: 11:30 am - 2:30 pm

Days: Monday - Thursday

Dates: June 17 - July 18 (No Program June 19 and July 4)

Program Code / Fee: 350005-01 / \$1043



TRADITIONAL DAY CAMPS

Adventure Seekers

Location: Village Green, Northbrook

Eligibility: Open to anyone within the age range

Age: 14 - 22

Min/Max: 8/10

Who's ready for an adventure? Calling all Highschool and Transition ages campers! NSSRA is offering an afternoon Summer Recreation Camp that will provide active summer opportunities in a community setting. With Village Green being right in the heart of downtown Northbrook, this camp will have a heavy community presence as we explore, swim, play sports, create art, spend time outdoors and more! Campers will engage socially with their peers and staff as well as build fine and gross motor skills while exploring new interests.

- ▣ NSSRA will provide registered campers with a t-shirt.
- ▣ A detailed schedule will be mailed home prior to camp.
- ▣ Parents must pick up campers after camp.
- ▣ Registration is first come, first served.

Time: 1:15 - 4:00 pm

Days: Monday - Thursday

Dates: June 17 - July 18 (No Program June 19 and July 4)

Program Code / Fee: 350004-01 / \$956



Campyardigans and Camp Sunburst

Eligibility: Open to anyone within the age range

Age: 5 - 13

Min/Max: 8/10 per camp

Campyardigans provides active summer opportunities for campers in a community setting. Campers will experience a variety of activities including sports, games, swimming, arts, outdoor activities, leisure, community outings and more! Campers will engage socially with their peers and staff as well as build fine and gross motor skills while exploring new interests.

- ▣ What's the difference between Campyardigans and Camp Sunburst? Just the location!
- ▣ NSSRA will provide registered campers with a t-shirt.
- ▣ A detailed schedule will be mailed home prior to camp.
- ▣ Registration is first come, first served.

Time: 12:00 - 3:00 pm (pending summer school schedules)

Days: Monday - Friday

Dates: June 17 - July 19 (No program June 19 and July 4-5)

Campyardigans

Location: Clarkson Park, Northfield

Program Code / Fee: 350006-01 / \$1274

Transportation Code / Fee: 350006-51 / \$275

Camp Sunburst **New Camp!**

Location: Willow Park, Glenview

Program Code / Fee: 350007-01 / \$1274

Transportation Code / Fee: 350007-51 / \$275

Transportation Information

NSSRA offers optional transportation. School pick up and community drop off locations and times are determined based on campers summer school locations. A minimum of three campers is required to establish a pick up point. Transportation for outings is included in the camp fee.

PRE AND POST-CAMP

NEW! Pre-Camp

Registration Deadline: Friday, March 15

Location: Clarkson Park, Northfield

Eligibility: Open to anyone within the age range

Age: 5 - 13

Min/Max: 8/10

Do you have a week of down time between school's end and summer school's start? Come join us for a week of pre-day camp! This camp will provide campers with a variety of recreation activities to kick off the summer. Campers will enjoy sports, swimming, arts, crafts, outdoor activities and more.

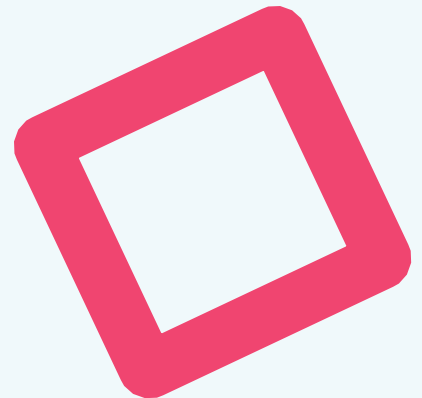
- ▢ A detailed schedule will be mailed home prior to camp.
- ▢ Parents must drop off and pick up campers at the camp site.
- ▢ Registration is lottery based.

Time: 9:00 am - 3:00 pm

Days: Monday - Friday

Dates: June 10 - June 14

Program Code / Fee: 350008-01 / \$579



Post-Camp

Registration Deadline: Friday, March 15

Location: Clarkson Park, Northfield
Willow Park, Glenview

Eligibility: Open to anyone within the age range

Age: 5 - 21

Min/Max: 8/15

Come enjoy the last weeks of summer break at Post Camp! Post Camp is designed to provide campers an extended summer experience through a variety of recreation activities. Campers enjoy sports, swimming, arts, crafts, outdoor activities, field trips and beach days.

- ▢ Once registered, participants will be assigned to Group A or B based on age.
- ▢ Registration is lottery based.

Time: 9:00 am - 2:45 pm

Days: Monday - Friday

Dates: July 29 - August 2

Session Options

Session 1 Dates: July 22 - 26

Session 1 Program Code/Fee: 350009-01 / \$555

Session 2 Dates: July 29 - August 2

Session 2 Program Code/Fee: 350009-02 / \$555

Transportation Information

NSSRA offers optional transportation to and from camp. Community pick up and drop off locations and times are determined based on registration. A minimum of three campers is required to establish a pick up point.

Session 1 Transportation Code/Fee: 350009-51 / \$62

Session 2 Transportation Code/Fee: 350009-52 / \$62



FRIDAY FIELD TRIPS

Friday Field Trips

Registration Deadline: Friday, March 15

Location: Varies

Eligibility: Open to anyone within the age range

Age: 5 - 22 **Min/Max:** 6 /8

It's Finally Friday! Grab your friends and join us for some great times and celebrate the end of the week with some Friday fun. Sign up for all or choose only the ones that interest you. Each outing has a separate fee that covers admission, and transportation.

Campers must wear an NSSRA camp t-shirt and bring water. Please bring additional money if you would like to purchase snacks or drinks at the concessions. NSSRA will email transportation details before the start of the program.

☐ Registration is lottery based

Time: 10:00 am - 3:00 pm (Approximate)

Day: Friday

Dates: June 14 - July 19

Mystic Gardens Chicago Botanic Gardens

Date: Friday, June 14

Location: Chicago Botanic
Garden, Glencoe

Let's experience all life has to offer with a meal at Brunch Cafe then immerse ourselves into one of the world's most impressive living museums. The Garden is a place of ever-changing beauty that you may stroll through this summer, with 27 spectacular gardens on 385 acres. With so much to explore, I'm sure we'll have a lot of fun!

Program Code / Fee: 350010-61 / \$116

Get Out & Play!

Date: Friday, June 21

Location: Flick Pool, Glenview

Let the Summer Fun begin! Get ready for a action-packed day as we kick off festivities at the playground, where we'll climb, swing, and slide into a world of excitement. After working up an appetite, we'll gather to eat a delicious lunch from the Concession Stand, but the fun does not end there! We will head over to the Flick Pool to dive into the refreshing waters and create a splash this summer!

☐ Please bring a labeled swimsuit, towel, and extra set of clothes

Program Code / Fee: 350010-62 / \$72

Trail Explorers

Date: Friday, June 28

Location: Heller Nature Center

Let's start the morning at Eggspresso for a delicious breakfast! Then, you'll join us at the Heller Nature Center as we experience nature at its best! We'll be taken on a guided hike through the forest, where we'll take in the beautiful scenery, breath in the fresh air and conclude our hike by making s'mores around a campfire with all our friends. YUM!

Program Code / Fee:

350010-63 / \$80

Where the Wild Things Are

Date: Friday, July 12

Location: Brookfield Zoo

Explore nature's most magnificent creatures up close and personal at the Brookfield Zoo. Witness the mighty Gorilla's tropical realm, dive beneath a dolphin habitat or chill out with the penguins. The animal kingdom is waiting for you!

- ▶ Please bring additional money to purchase lunch or bring a sack lunch.

Program Code / Fee:

350010-64 / \$96

Aquatic Adventures

Date: Friday, July 19

Location: Mystic Waters Family Aquatic Center, Des Plaines

What a bummer; it's our last Friday for the summer. Not to worry, we made sure to end our week with a SPLASH! The plan for the day is to start our morning sunny side up by eating some delicious breakfast. Then, we'll head over to Mystic Waters Family Aquatic Center, where we'll spend the afternoon slipping, sliding and swimming.

- ▶ Please bring a labeled swimsuit, towel and extra set of clothes.

Program Code / Fee:

350010-65 / \$85



CODE OF CONDUCT

Behavior

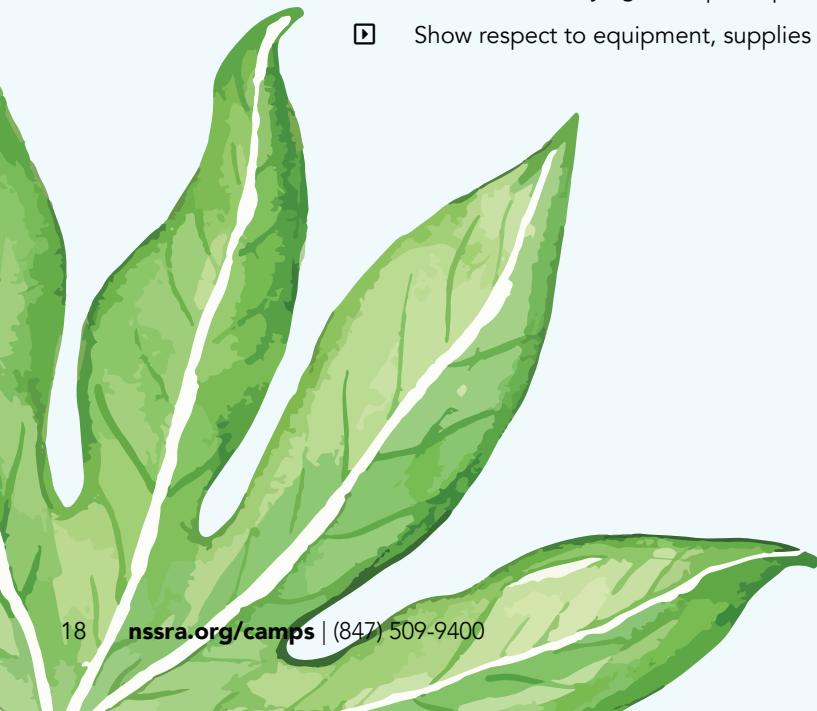
All participants and their guests are expected to exhibit appropriate behavior at all times while participating, spectating or attending any program or activity sponsored by NSSRA. This includes participation in programs that may or may not require an admission fee. For the purpose of the Code of Conduct, the term "program" refers to all recreational events you may attend as a participant, spectator or visitor sponsored by NSSRA.

Equal Access

No eligible participant shall, on the basis of race, creed, national origin or disability, be denied equal access to programs, activities, services or benefits or be limited in the exercise of any right, privilege, advantage or opportunity. If any special accommodations are necessary for participation in any program or to receive any service provided by NSSRA, please notify staff upon registration.

Participants and their guests shall:

- ▣ Show respect to all participants and program staff and/or supervisors.
- ▣ Take direction from program staff and/or supervisors.
- ▣ Refrain from using abusive or foul language.
- ▣ Refrain from causing bodily harm to self, other participants or program staff and/or supervisors.
- ▣ Refrain from bullying other participants or program staff and/or supervisors.
- ▣ Show respect to equipment, supplies and facilities.

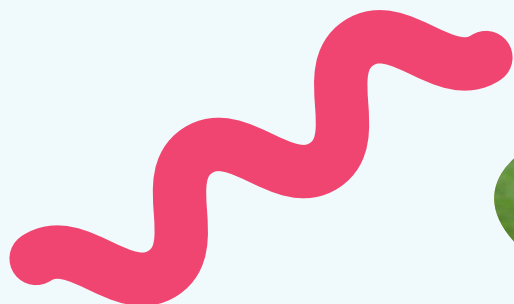


Participant Expectations

- ▶ Clean, dry clothing.
- ▶ No bowel/bladder problems upon arrival at the transportation location or program. If this is a concern, extra clean clothing, clean-up supplies and Depends™ garments or similar items must be sent with the participant.
- ▶ Attention to body odor.
- ▶ Overall appearance should be clean.
- ▶ Appropriate attire for program participation. If you have questions about the type of attire participants should wear for a particular program, please contact our office.
- ▶ NSSRA staff will also be consistent in stressing personal hygiene while participants are in our programs and will not return participant(s) in an unclean manner at the end of a program.

Discipline

A positive approach is used when disciplining. Program staff may discuss the Code of Conduct with all program participants prior to the start of the program and will periodically review the Code of Conduct. If inappropriate behavior occurs, staff will develop a solution specific to each situation as it arises. NSSRA reserves the right to dismiss participants whose behavior endangers themselves or others.



GENERAL POLICIES

Financial Assistance

Participants in need of financial assistance may download the Scholarship Application from our website at www.nssra.org/forms or request a copy from NSSRA at (847) 509-9400 or registration@nssra.org.

Send in your registration form with the application. All requests are reviewed by the Executive Director, and you will be notified upon approval. Financial assistance is not awarded to non-resident participants or for cooperative programs, special events or trips.

High-Risk Waiver Policy

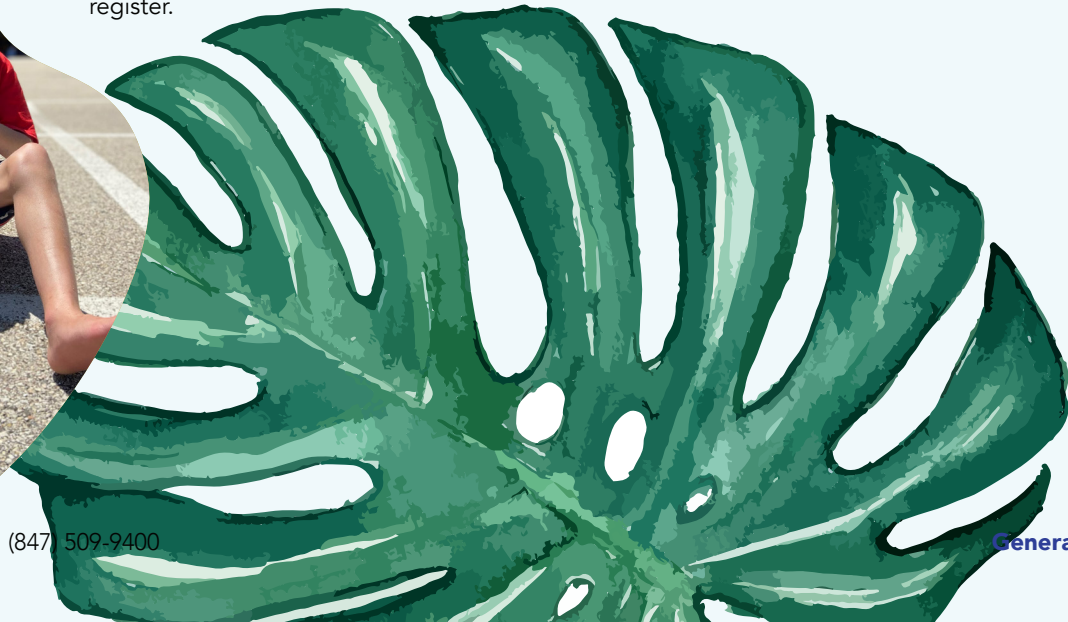
Activities that involve potential high-risk activities will require signed high-risk waivers to be returned to the office two weeks prior to event date or start of program.

If a waiver has not been returned by the deadline, participation will not be permitted for that specific event or program.

Participant Information

To better serve our participants and their families, we collect participant information regarding diagnosis, allergies, dietary needs, medications, mobility, communication, safety, behaviors, and daily life skills. A completed ePACT profile must be on file before registration. If you are new to NSSRA or have not completed an ePACT profile, please contact our team at registration@nssra.org for more details.

ⓘ If you do not have a completed ePACT profile on file, you will not be allowed to register.



Americans with Disabilities Act (ADA)

NSSRA complies with the Americans with Disabilities Act (ADA) and will make reasonable accommodations to enable individuals with disabilities to participate in and enjoy recreation programs. If you have a question about NSSRA's compliance, or feel that NSSRA has discriminated against you, please contact Craig Culp, Executive Director, at (847) 509-9400 x6820 or cculp@nssra.org.

Inclement Weather Policy

If inclement weather occurs, NSSRA may still decide to hold programs. If the weather turns dangerous (100 degrees or higher actual temperature or heat index, 2 degrees or lower actual temperature, -30 degrees or lower wind chill or severe snow/ice), NSSRA will call participants before the start of a program to cancel the program. If you are not sure whether a program will meet due to inclement weather, call NSSRA. Refunds are issued for canceled programs.

Private Meetings

NSSRA staff members are available to conduct 30-minute private consultations to discuss recreation and leisure opportunities for individuals with disabilities.



GENERAL POLICIES

Special Assistance and Sign Language Interpreters

If you need special assistance or a sign language interpreter, please inform NSSRA upon registration.

Boardmaker

If a participant uses a picture-making program such as Boardmaker, please indicate so on the registration form, and our staff will work with you to facilitate its use at our programs.

Participant Wellness

In consideration of other participants and the NSSRA staff and to prevent the spread of contagious illnesses, it is requested that participants refrain from attending programs when any of the following conditions exist:

- ▶ Did not attend school, camp, or work due to illness that day
- ▶ Fever of 100 degrees or higher (when this occurs, participants must stay home for one whole program day - 24 hours from time sent home)
- ▶ Vomiting within the last 24 hours
- ▶ Persistent diarrhea in conjunction with other symptoms
- ▶ Contagious rash or rash of unknown origin
- ▶ Persistent cough and/or cold symptoms
- ▶ "Pink Eye" (conjunctivitis) or eye discharge
- ▶ Symptoms of mumps, measles, chicken pox, strep throat, flu, impetigo or coxsackie virus
- ▶ Runny nose with yellow or green discharge
- ▶ Lice/mites present
- ▶ Fatigue due to illness that will hinder participation and enjoyment in the program
- ▶ NSSRA will monitor federal, state, and local health guidelines pertaining to infectious diseases.

REGISTRATION POLICIES



Program Payment

Outstanding balances must be paid prior to registration. If assistance is needed regarding payment, contact NSSRA at (847) 509-9400 or registration@nssra.org.

Resident/Non-Resident Policy

If you live in one of NSSRA's ten partner park district, two cities, or village, you are considered a resident. These include the Park Districts of Deerfield, Glencoe, Glenview, Highland Park, Kenilworth, Lake Bluff, Northbrook, Northfield, Wilmette and Winnetka, the Cities of Lake Forest and Highwood, and the Village of Riverwoods.

Individuals residing outside the NSSRA boundaries must pay an annual Administrative Fee prior to registering for any NSSRA program. The Administrative Fee is approximately \$2,200.

This fee allows participation in NSSRA programs for one year.

Program & Transportation Fees

Each program and event listed in our program guide is assigned one code and one fee. If the program offers optional transportation, a separate code and fee will be listed.

Program Lottery

NSSRA uses a lottery system for some programs and camps. When participants register for a program, they will be put on a waitlist until the lottery is conducted. You don't need to make any payment during registration. The outcome of the lottery will be communicated to all participants by Thursday, March 23. You will receive a receipt via your primary email address, which will list the programs you are enrolled in, and payment will be expected by Monday, April 15.

If the program you selected is in high demand and becomes full during the lottery, you will remain on the waiting list. Your position on the list will be determined by the lottery results and will be specified on your receipt. We will do our best to accommodate the waitlists. Openings in programs are dependent on factors such as staff availability, transportation, facility space, and pre-purchased tickets. **NSSRA staff will regularly review the waitlists during the season and will contact you if a spot becomes available in a program.**

SAFETY AND INSURANCE INFORMATION

NSSRA is committed to conducting its recreation programs and activities in the safest manner possible and holds participants' safety in the highest possible regard. Participants and parents registering for recreation programs must recognize, however, that there is an inherent risk of injury when choosing to participate in recreational activities. NSSRA continually strives to reduce such risks and insists that participants follow all safety rules and instructions designed to protect the participants' safety.

Please recognize that NSSRA does not carry medical accident insurance for injuries sustained in its programs. The cost of such would make program fees prohibitive. Therefore, each person registering themselves or a family member for a recreation program/activity should review their own insurance coverage. It must be noted that the absence of health insurance coverage does not make NSSRA automatically responsible for the payment of medical expenses.

Due to the difficulty and exorbitant cost of obtaining liability insurance, the agency providing liability coverage for NSSRA requires the execution of a Waiver and Release. Certain high-risk activities may require an additional waiver prior to participation. This waiver must be signed before participation in a program. See NSSRA's High-Risk Waiver Policy on page 60 for more information.

📞 Please contact NSSRA Safety Coordinator Meggan Davies at (847) 509-9400 x6828 or mdavies@nssra.org with any questions.





Registration Form

Mail or drop off to: Mitchell L. Slotnick Center / NSSRA | 1221 County Line Rd., Highland Park 60035
Fax: (847) 509-1177 • Email: registration@nssra.org
Please be sure to include check or credit card information.

PARTICIPANT INFORMATION

Participant's Name: _____ Age: _____ Grade: _____ New Participant? ☐ Yes ☐ No

If you answered yes or if any information has changed since last season, please complete the fields below:

Address: _____ City: _____ Zip: _____

Primary Contact Name/Phone: _____ Email: _____

Primary Emergency Contact Name/Phone: _____

Participant's School/Work: _____ Teacher/Contact Name: _____

School/Work Phone: _____ Diagnosis: _____

☐ Participant Requires Medication During Program

REGISTRATION INFORMATION

(Need more space? Flip to the next page.)

Program Information			Transportation Information		SUBTOTAL
Program	Code	Fee	Code	Fee	(Program Fees)

☐ Yes, I would like to make a donation to NSSRA Foundation. To learn more about NSSRA Foundation, visit www.nssrafoundation.org.

Waiver & Release of All Claims

Please read this form carefully and be aware in registering yourself or your minor child/ward for participation in an NSSRA program, you will be waiving and releasing all claims for injuries you or your minor child/ward might sustain arising out of said program(s). I recognize and acknowledge that there are certain risks of physical injury to participants in a program, and I agree to assume the full risk of any injuries, damages or loss regardless of severity which I or my minor child/ward may sustain as a result of participating in any and all activities connected with or associated with such program (including transportation services and vehicle operation, when provided). I agree to waive and relinquish all claims I or my child/ward may have as a result of participating in the program against NSSRA and its officers, agents, servants, and employees. I do hereby fully release and discharge NSSRA and its officers, agents, servants, and employees from any and all claims from injuries, damage, or loss which I or my minor child/ward may have or which may accrue to me or my child/ward and arising out of, connected with, or in any way associated with the activities of the program. I further agree to indemnify and hold harmless and defend NSSRA and its officers, agents, servants, and employees from any and all claims resulting from injuries, damages, and losses sustained by me or my minor child/ward arising out of, connected with, or in any way associated with the activities of the program. In the event of any emergency, I authorize NSSRA officials to secure from any licensed hospital, physician and or medical personnel any treatment deemed necessary for me or my minor child/ward's immediate care and agree that I will be responsible for payment of any and all medical services rendered. I have read and fully understand the above Program Details, Waiver and Release of All Claims and Permission to Secure Treatment.

Subtotal Fee:	
Subtotal from Reverse Side:	
Deposit:	
Credits:	
TOTAL DUE:	

OFFICE USE ONLY:

Registration Complete

Date: _____ Time: _____

Receipt #: _____

➔ EACH REGISTRATION FORM MUST BE SIGNED*

Participant/Parent/Guardian: _____ Date: _____ Please Print Name: _____

*If registering by fax or electronically your facsimile or electronic signature shall substitute for and have the same legal effect as an original form signature.

PAYMENT INFORMATION: This Section Must Be Completed

☐ If paying by check, please fill in your check number here: _____

☐ If you are using Mastercard, Visa, Discover or American Express, please complete the following section:

Please check one: ☐ Mastercard ☐ Visa ☐ Discover ☐ AMEX

Cardholder Name: _____ Card Number: _____

CV #: _____ Exp. Date: _____ Billing Zip Code: _____ Amount of Charge: \$ _____

Authorized Signature: _____

Registration Form (Page 2)

 Please Print Participant's Name: _____

REGISTRATION INFORMATION CONTINUED[illegible]

COMMENTS: We Welcome Your Input

You or your child is participating in programs through NSSRA and/or your local park district or recreation department. NSSRA services include providing year-round recreation programs for the residents of its thirteen partner communities, Inclusion support, sign language interpreters, behavior management support and training, disability awareness training and any other services necessary to involve you and your child in community recreational activities.

We encourage you to share with us your thoughts and ideas about our current services or other services which you would like to see us offer. We use your comments to develop new programs, train support staff and companions, and improve the quality of NSSRA and park district or recreation department programs.

Please send any feedback to info@nssra.org!